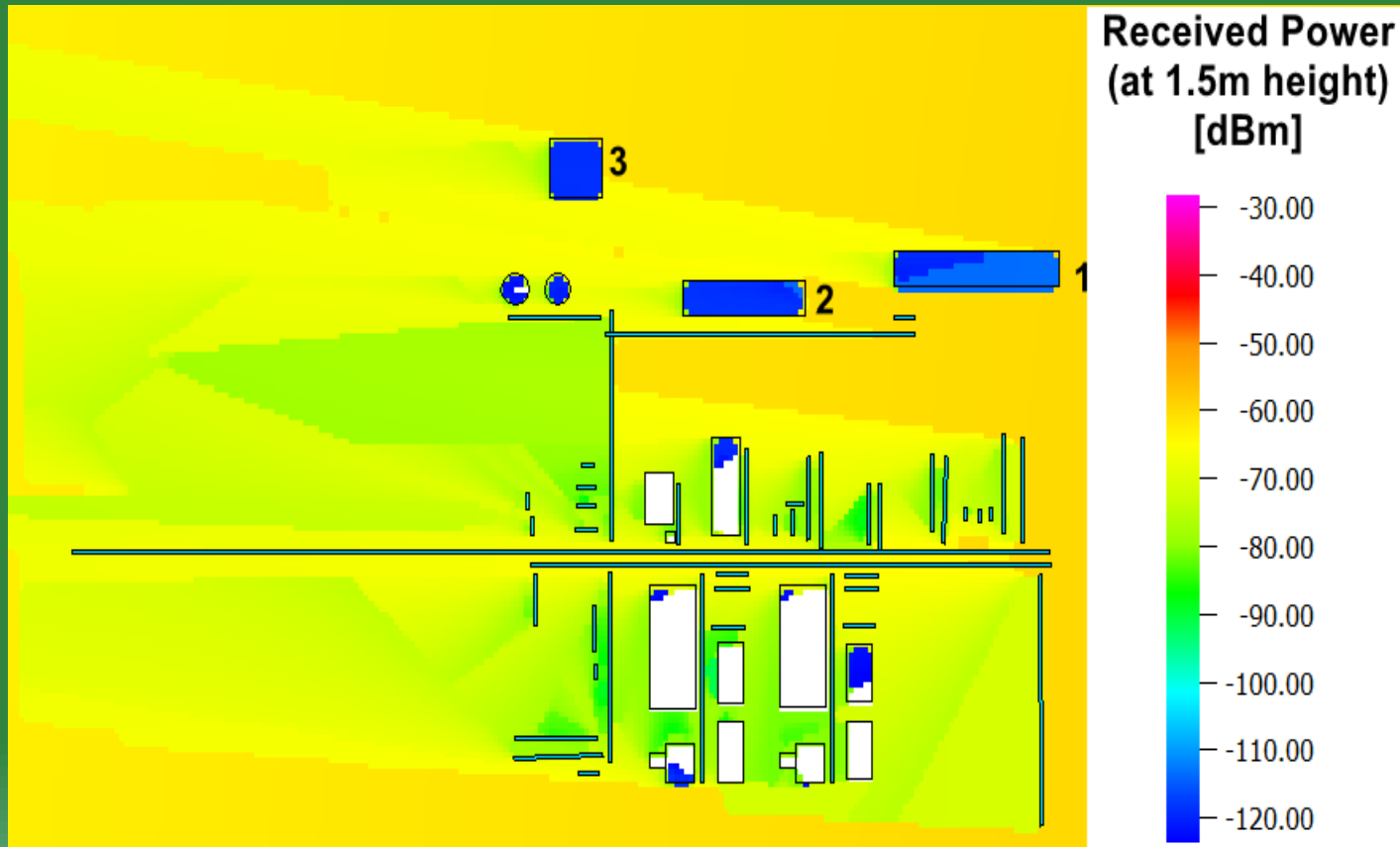


Net Technologies Finland Oy

Virtual Reality Tool for RF Data and Results



Current way to display RF Data and Results



Disadvantages:

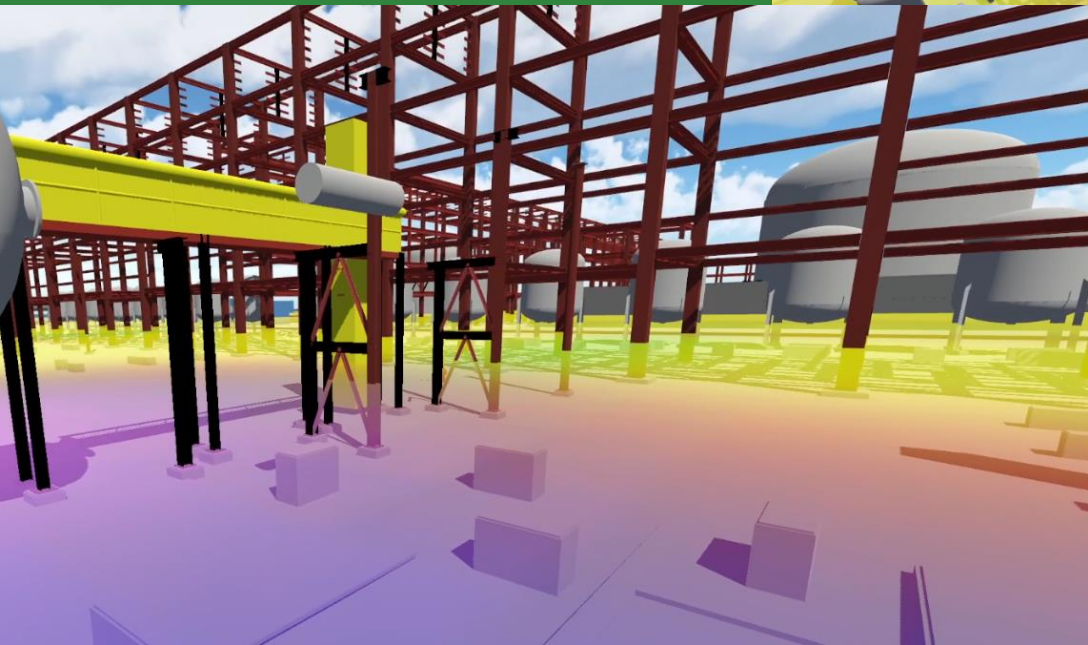
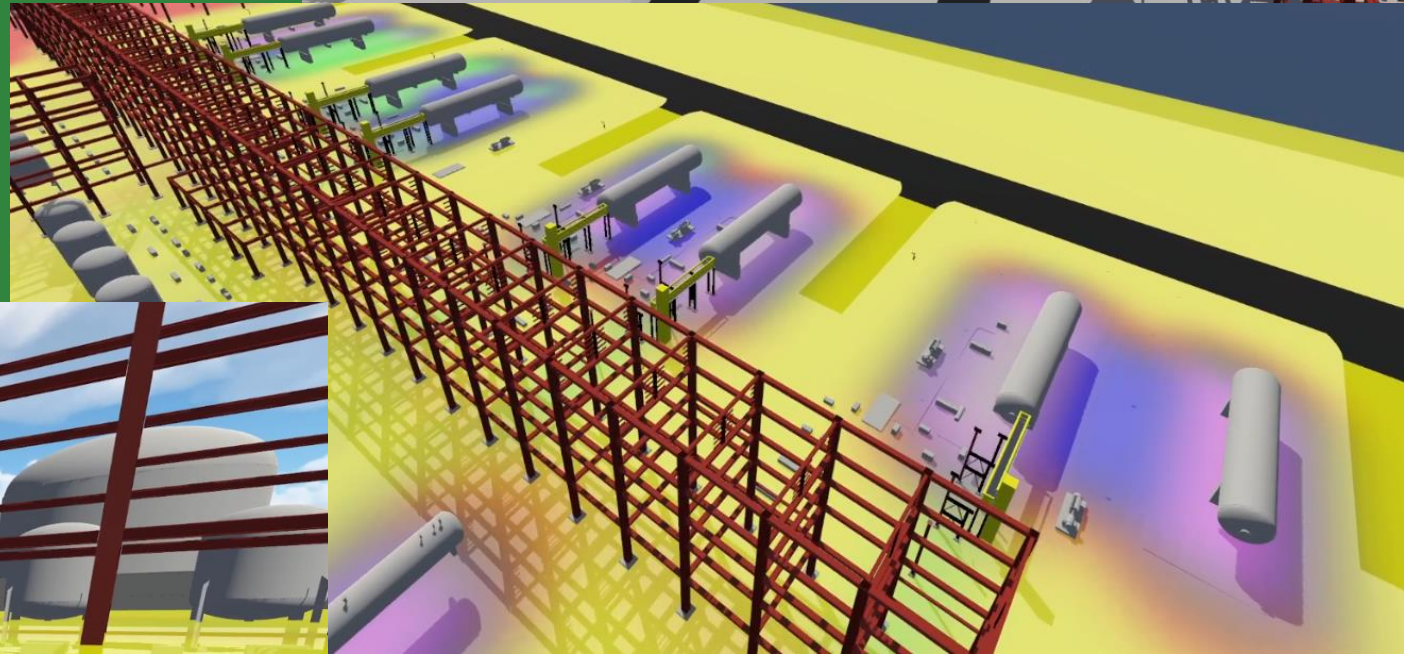
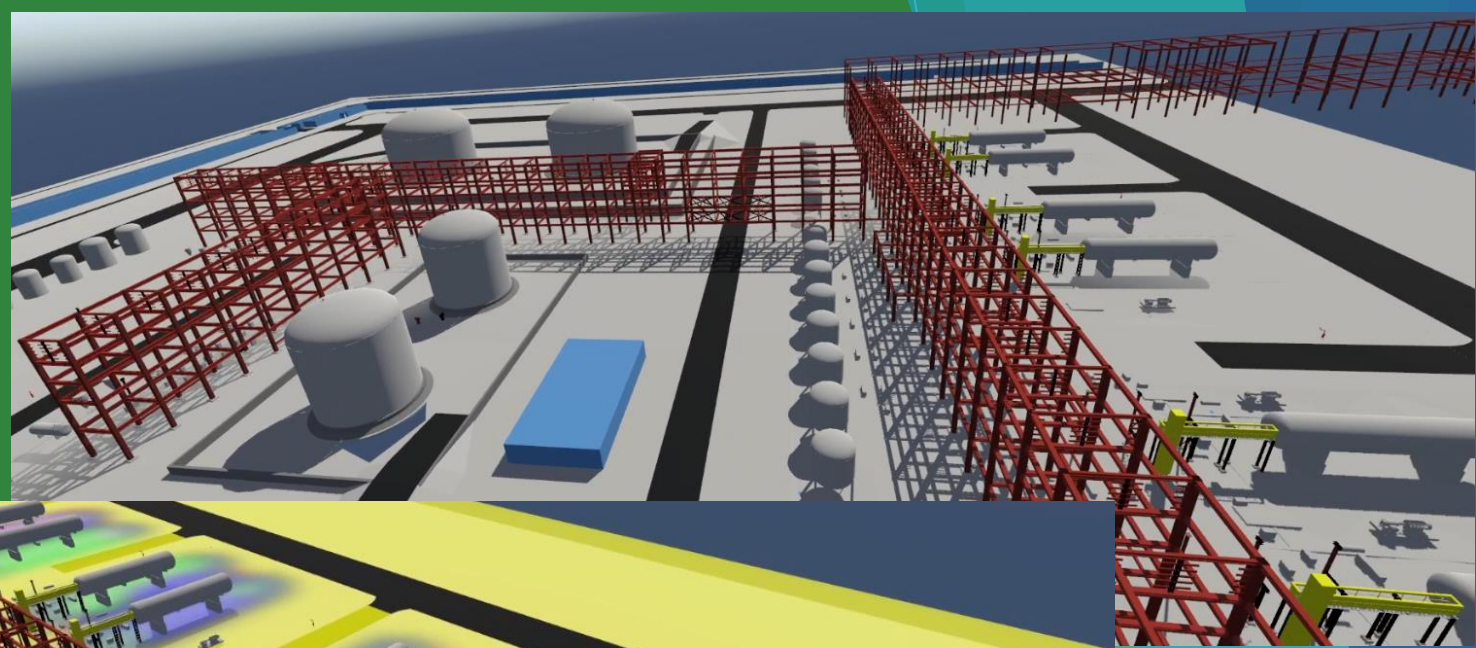
- 1) Simplified obstacles models (buildings, pipes, water tanks)
- 2) Not possible to observe the levels
- 3) Not possible to see details on ground level
- 4) Not possible to see the results (signal levels, BS Classes, Interference etc) in the vicinity
- 5) Not possible to examine the entire area of interest (plant, refinery, buildings etc)
- 6) Low clients' satisfaction levels

Net Technologies State of Art Solution

- 1) Breakthrough concept with 3D Virtual Reality features.
- 2) Detailed visualization of all elements of the target area (buildings, pipes tanks etc).
- 3) Improved understanding of coverage (and other) simulation results.
- 4) Possibility to walk through the entire area.
- 5) Possibility to observe at different height levels (in the vicinity of the area and all elements).
- 6) Better understanding of RF signal propagation possibility to identify potential issues.
- 7) Modern way to present the results – video, 3D export plots, VR functionality
- 8) Increased clients' satisfaction level

What are the benefits?

- 1) Full and detailed 3D view
- 2) All kind of results (such as RSSI, Interference, Best Server Classes, etc)
- 3) Drive Test Measurements
- 4) Better understanding of your network coverage



Contact

Net Technologies Finland Oy
Leikosaarentie 27 C 00990 Helsinki
+358409639530

www.nettechn.com
info@nettechn.com



[https://twitter.com/
Nettechn](https://twitter.com/Nettechn)



[https://m.facebook.com/nettec
hn/?locale2=el_GR](https://m.facebook.com/nettechn/?locale2=el_GR)

LinkedIn

[https://www.linkedin.com/
company/net-
technologies/](https://www.linkedin.com/company/net-technologies/)

Net Technologies Finland Oy